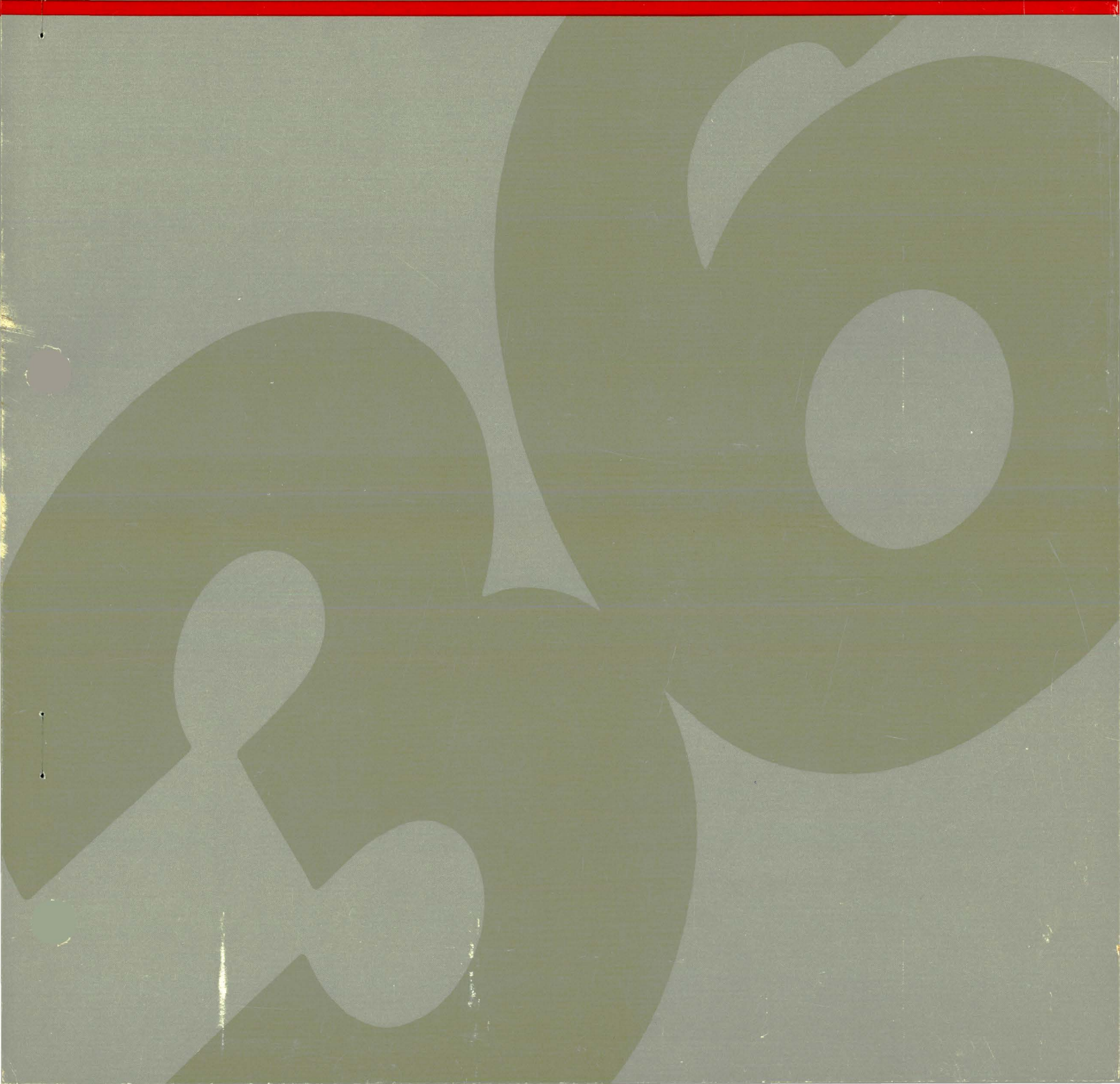
 System/36

3270 Device Emulation Messages



IBM System/36

3270 Device Emulation Messages

BSC Messages-EMU
SNA Messages-ESU

Program Numbers: 5727-SS1
5727-SS6

File Number
S36-36

Order Number
SC21-7945-4

Fifth Edition (October 1986)

This major revision obsoletes SC21-7945-3.

Changes are periodically made to the information herein; any such changes will be reported in subsequent revisions. Changes or additions to the text and illustrations are indicated by a vertical line to the left of the change or addition.

This edition applies to Release 5, Modification Level 0, of IBM System/36 System Support Program Products (Program 5727-SS1 for the 5360 and 5362 System Units, and Program 5727-SS6 for the 5364 System Unit), and to all subsequent releases and modifications until otherwise indicated in new editions.

References in this publication to IBM products, programs, or services do not imply that IBM intends to make these available in all countries in which IBM operates. Any reference to an IBM program product in this publication is not intended to state or imply that only IBM's program product may be used. Any functionally equivalent program may be used instead.

This publication contains examples of data and reports used in daily business operations. To illustrate them as completely as possible, the examples include the names of individuals, companies, brands, and products. All of these names are fictitious and any similarity to the names and addresses used by an actual business enterprise is entirely coincidental.

Publications are not stocked at the address given below. Requests for IBM publications should be made to your IBM representative or to the IBM branch office serving your locality.

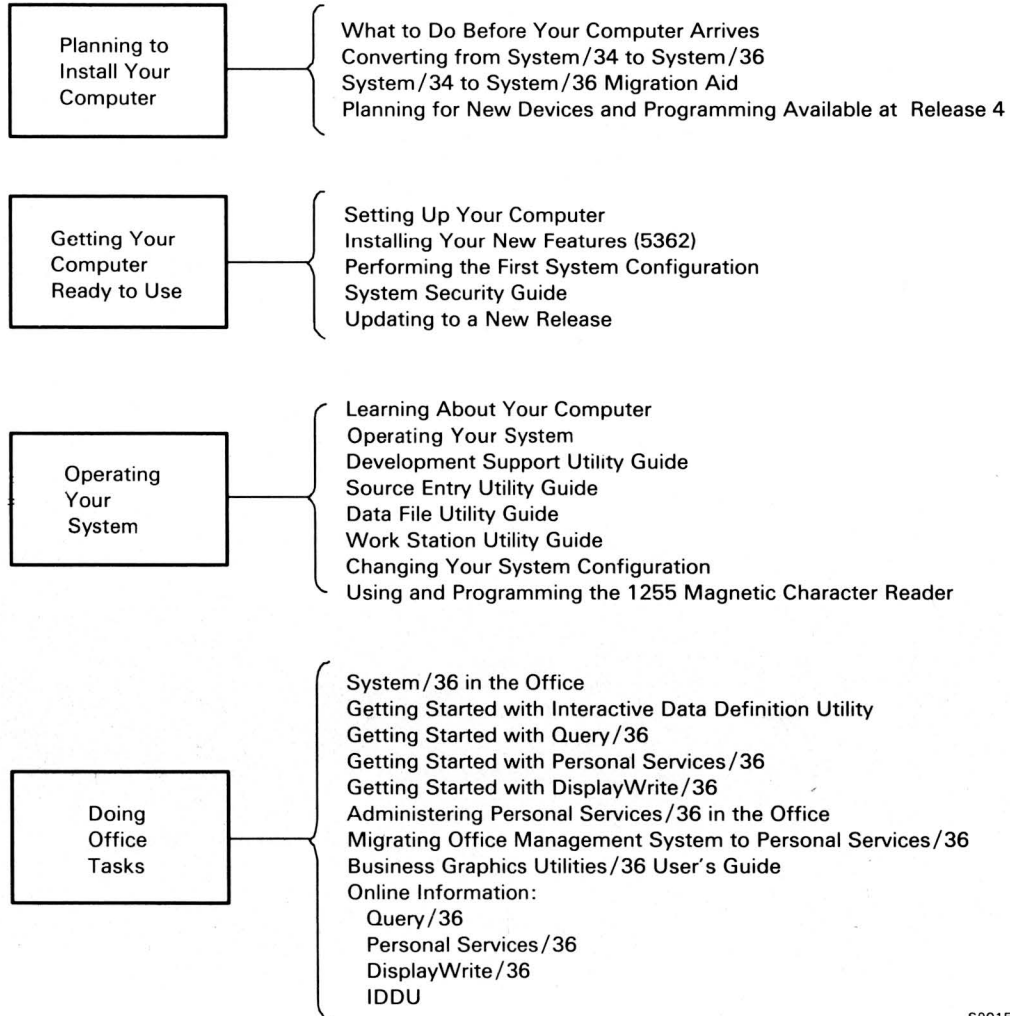
A form for reader's comments is provided at the back of this publication. If the form has been removed, comments may be addressed to

IBM Canada Ltd.
Information Development,
Department 849,
895 Don Mills Road,
North York, Ontario, Canada. M3C 1W3

IBM may use or distribute whatever information you supply in any way it believes appropriate without incurring any obligation to you.

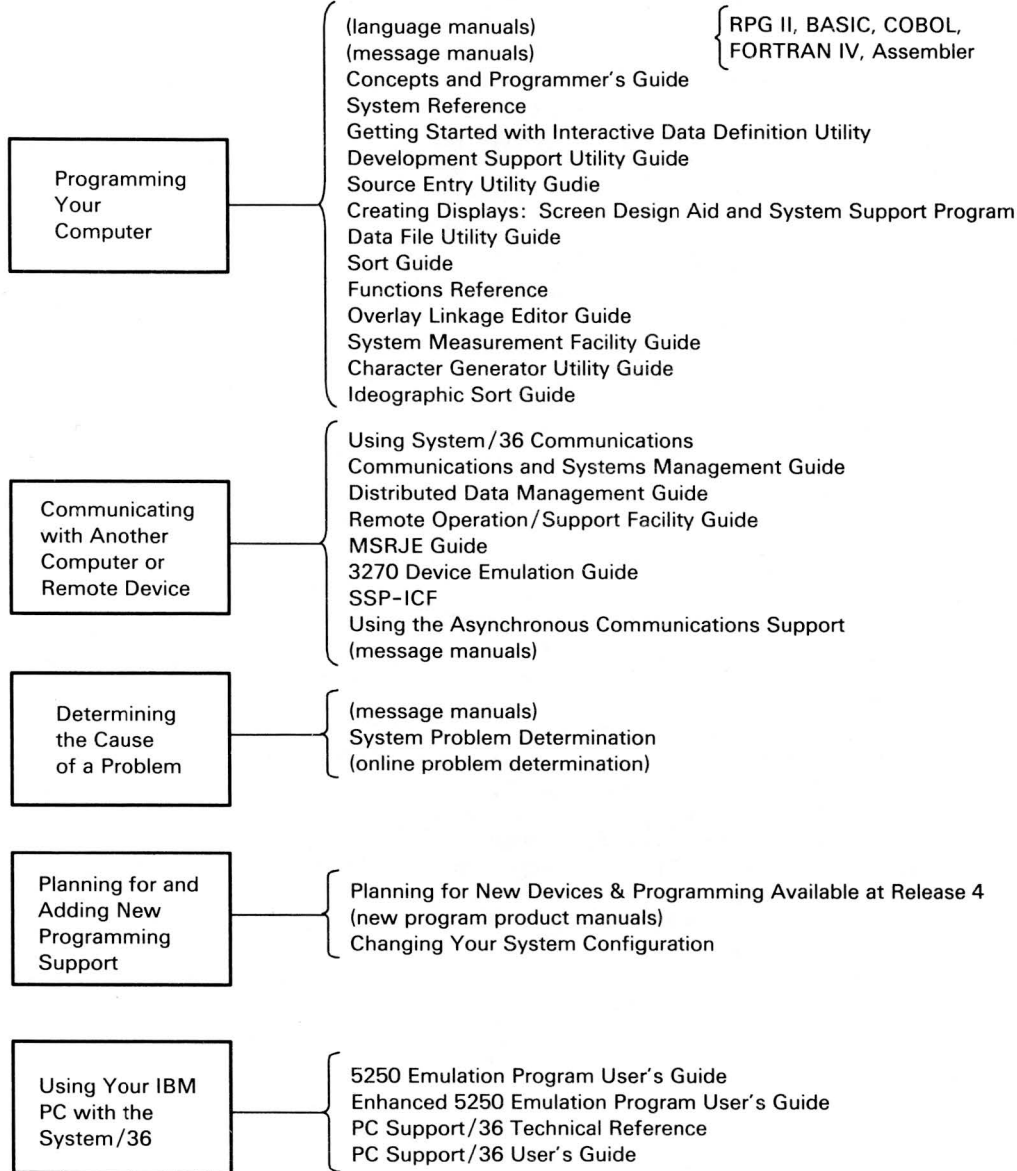
When You Are:

You Can Find Information In:



When You Are:

You Can Find Information In:



{ RPG II, BASIC, COBOL,
FORTRAN IV, Assembler

Contents

About This Manual	v
What you should know	v
If you want more information	v
General SSP Related Manuals	v
If You Do Not Understand a Term Used in This Manual	vi
Insert Tabs	vi
How this manual has changed	vi
Chapter 1. Introduction	1-1
Format of Messages	1-1
Message Identification Code	1-1
Message Text	1-1
Variable Data Fields	1-1
Additional Displayed Information (Messages Ending with . . .) . . .	1-2
Severity and Auto Response	1-2
Severity Field	1-2
Auto Response Field	1-3
Explanation	1-3
Additional Information	1-3
User Response	1-4
Calling for Service	1-5
Chapter 2. EMU Messages (BSC)	2-1
Chapter 3. ESU Messages (SNA)	3-1
Glossary	G-1

About This Manual

This manual describes all messages that are displayed and printed by 3270 Device Emulation. This manual is intended to help the display station operator, the system operator, or the programmer respond to a message, or to decide who to contact for help.

What you should know . . .

IBM System/36: Learning About Your Computer, SC21-9018, which contains introductory material about the IBM System/36. You should read this manual first if you are not familiar with the System/36.

If you want more information . . .

You might want to read some or all of the following manuals before or while you are using this manual. Except where otherwise indicated, each is a System/36 manual.

General SSP Related Manuals

- *3270 Device Emulation Guide*, SC21-7912, describes the configuration and operation of a system that uses BSC and SNA 3270 Device Emulation or BSC program interface.
- *System Reference*, SC21-9020, which contains a detailed description and examples of the procedure commands, the control commands, the operation control language (OCL) statements, and the procedure control expressions (PCEs) that are used to operate the System/36.
- *Operating Your System 5360, 5362*, SC21-9452 and *Operating Your System 5364* SC21-9453 describe how to operate the System/36.
- *Concepts and Programmer's Guide*, SC21-9019, describes how the system functions. It also contains information about techniques to use when programming the System/36.
- *System Problem Determination*, SC21-7919 for the 5360 System Unit, SC21-9063 for the 5362 System Unit, or SC21-9375 for the 5364 System Unit, describes what you can do before calling your service representative.

- *Interactive Communications Feature: Programming for Communications Subsystems and Intra Communications Subsystem Reference Manual*, SC21-9533, describes the Interactive Communications Feature (SSP-ICF) subsystems.

If You Do Not Understand a Term Used in This Manual

Many terms and concepts used in this manual are introduced in the manual *Learning About Your Computer*. If you are unfamiliar with the System/36, you should read that manual first. Other terms used in this manual are defined in the "Glossary" at the back of this manual.

Insert Tabs

Insert tabs are available to divide this manual into sections. This will help you locate messages quickly. You also can use the insert tabs to merge this messages manual and other messages manuals into one volume. By merging the different messages manuals into common volumes, you can customize messages manuals to suit the specific requirements of your system. Requests for insert tabs should be made to your IBM representative or the IBM-approved remarketer serving your locality. The title and order number are: *Tabs for Messages*, SX21-7946.

How this manual has changed . . .

Only minor changes have been made to existing messages. Messages have been added or changed to reflect changes made for SNA Printer Emulation Spool File Close.

Chapter 1. Introduction

Format of Messages

Messages described in this guide are in the following format:

Message identification code Message text [variable data]

Severity Auto Response

Explanation

Additional Information

User Response

Message Identification Code

This is the 3 alphabetic characters, EMU or ESU, followed by a dash and a 4-digit number:

- The alphabetic characters identify the section of this manual in which you will find a particular message.
- The 4-digit numbers are arranged in ascending order within each alphabetic section.

Message Text

The message text shown on the display should match the message text in this messages guide. The only exceptions are when the message contains variable data fields.

Variable Data Fields

Variable data fields contain information that is different in each situation for which a message is issued. Variable data fields contain information such as a work station ID, or a file name, or whatever the variable data might be. In this manual: the *name* of the variable data is enclosed in brackets, for example, [work station ID]; or the *length* of the variable data field is indicated by a string of # signs.

Additional Displayed Information (Messages Ending with . . .)

Some messages may have additional displayed information above the message text to help you determine how to correct the error. If a message ends with three dots (. . .), you can display additional information about the message by pressing the Enter key. If you are using the Console display, you must use the REPLY command. See the manual *Operating Your System* for an example of displaying additional message information. The additional information does not appear word-for-word in the messages guide, but the message description in the guide is an expansion of the additional information on the display.

Severity and Auto Response

The severity level code is used by the system to determine whether a message should be automatically responded to. The auto (automatic) response code is the recommended response for that particular message if you choose to use auto response. If the auto response is N/A, auto response cannot be used for that message. (If you supply a value, it is ignored.) If the auto response is blank, you can use auto response, but it is recommended that the operator be allowed to see and respond to the message.

Severity Field

The severity field defines the seriousness of the problem that caused the halt. For displayed messages, the severity level is used by the system to determine whether a message should be automatically responded to.

Severity level specifies the automatic response severity level, which consists of 1, 2, 3, 4, and 5. Severity level values and their descriptions are:

- 1 Informational messages. Option 0 is the only allowable response.
- 2 Messages with one response option or messages with two response options where one option is a retry option.
- 3 Program error messages. These messages usually have more than one response option.
- 4 Messages for severe errors, such as hardware errors or permanent input/output errors.
- 5 No automatic response value can be defined for these messages.
- N/A Not applicable; same as level 5.

Auto Response Field

The auto response field defines the option that will be taken if NOHALT is in effect.

The NOHALT procedure specifies the auto response level for the system, your session, or a single job. This allows you to have messages with response values be automatically responded to by the system, rather than requiring an operator to enter the response to an error message.

The NOHALT procedure processes a NOHALT OCL statement.

Auto response values and their descriptions are:

- 0** Ignore the situation and continue processing the job step
- 1** Retry the situation and continue processing the job step
- 2** Job step ended, continue with the next step
- 3** Job canceled
- D** Dump
- H** Returns the user to the help screen that caused the error

For more information, see the *System Reference* manual.

Explanation

This part of the message description explains the reason for the message and tells the operator what action to take to continue. If the operator cannot correct the problem or continue operations, this part tells the operator whom to contact for help.

Additional Information

This section contains the more complex information about the message. The information is usually for the more experienced operator, the system operator, the security officer, or the programmer. However, the operator should always read the additional information before deciding what action to take.

User Response

This part of the message description describes all options that are available for a message. However, all the options are not always available each time a particular message occurs, nor do all messages have options. If a message does not have recovery options, any action required for the message is included under *Explanation* or *Additional Information*.

The following describes what generally happens when you enter an option in response to a message. However, be sure to read the option descriptions for each particular message, because the descriptions may be different for each message.

- *Option 0:* When you enter this option, the error condition is usually ignored and the job continues.
- *Option 1:* When you enter this option, the operation that caused the error is usually ignored and you can try the operation again.
- *Option 2:* This option usually ends the job step. Any data created up to this step is saved and you can continue with the next job step.
- *Option 3:* When you enter this option, the job is usually canceled. Any data created or work done by previous steps in this job is saved, but any data created or work done by the current job step is lost.
- *Option D:* This option is available whenever option 3 appears on the display; however, option D never appears on the display and is not described in this manual. When you enter option D, the contents of main storage and control storage are copied into the dump area on disk, copied onto diskettes, or printed on the printer. The system actions described for option 3 occur. After a dump is taken, you should save the dump information by using the APAR procedure or the DUMP procedure. For more information about these procedures, see the *System Reference* manual.
- *Option H:* This option is available whenever option 3 appears on the display and you are entering information from a Help prompt; however, option H never appears on the display and is not described in this manual. When you enter option H, the Help display that appeared when the error occurred is displayed again, and the cursor is positioned at the field where the error occurred. You can then correct the error and continue your job.

Calling for Service

Sometimes errors occur and, even though you follow the recovery actions in the message description, the error is not corrected or keeps occurring for no apparent reason. Sometimes the error cannot be corrected by the operator or the programmer, and the message tells you to notify your hardware service representative or program support representative.

If you do the following before you call for service, you will help the service representative determine what the problem is and correct it as quickly as possible:

- Fill out a *Problem Summary Form*. Use this form to record information about the system conditions at the time the error occurred. Copies of the *Problem Summary Form* are available in the *System Problem Determination* guide.
- If the system keyboard is available, do the following:
 - If a dump was taken, run the APAR or DUMP procedure to save a copy of the dump area for the service representative.
 - Press the Print key to print the information that was on the screen when the error occurred.
 - Run the HISTORY procedure to save a copy of the history file for the service representative.

For more information about running the above procedures, see the *System Reference* manual.

Chapter 2. EMU Messages (BSC)

EMU —2010 Incorrect parm 2. Must be ON, OFF, or not given

Severity: 3 Auto Response: 3

Explanation:

There is an error in the EM3270 procedure you are running.

Enter option 3, and do the following:

- Make sure that the second parameter is ON, OFF, or not given. Check for any typing error you might have made when entering the EM3270 procedure (for example, spelled a word wrong, left out a word or comma, or added a comma). If you find the error, run this job step again. You can use HELP EM3270 to help you enter the EM3270 procedure correctly.
- If you cannot correct this error, notify the programmer responsible for maintaining this job, and give the programmer the message identification code (EMU-2010).

Additional Information:

Parameter 2 in the EM3270 procedure is not correct. Parameter 2 specifies that a work station is to be signed on or off the BSC 3270 Device Emulation program. Correct entries for parameter 2 are ON, OFF, or not specified.

Be sure the EM3270 procedure was not changed since it was installed on your system. If the procedure was changed, reinstall BSC 3270 Device Emulation and run the procedure again. If the error continues, fill out a *Problem Summary Form* and notify your programming service representative.

User Response:

Option 3: The job is canceled. Data created by a previous step in this job is saved, but any data created by this step is lost.

EMU —3100 [work station ID] is an invalid work station ID

Severity: 3 Auto Response: 3

Explanation:

There is an error in the EM3270 procedure you are running.

Enter option 3, and do the following:

- Check to see if the value given for the work station ID is correct by sending a message to the work station you specified in the EM3270 procedure.

- If the work station ID is correct, run the procedure again using HELP EM3270.
- If the work station ID is not correct, notify the programmer responsible for maintaining this job, and give the programmer the message identification code (EMU-3100).

Additional Information:

Parameter 1 in the EM3270 procedure is not a correct work station ID in the current System/36 configuration.

Use the STATUS control command (D W) to display the status of the work station, or run the System Support Program (SSP) configuration (CNFIGSSP) procedure and review the current configuration record to determine a correct work station ID. Then run the EM3270 procedure again using the correct work station ID.

If the problem remains, be sure the EM3270 procedure was not changed since it was installed on your system. If the procedure was changed, reinstall BSC 3270 Device Emulation and run the procedure again. If the error continues, fill out a *Problem Summary Form* and notify your programming service representative.

User Response:

Option 3: The job is canceled. Data created by a previous step in this job is saved, but data created by this step is lost.

EMU —3101 3270 emulation support is not active

Severity: 3 Auto Response: 3

Explanation:

You tried to sign a work station on BSC 3270 Device Emulation. However, there is no System Support Program-Interactive Communications Feature (SSP-ICF) subsystem loaded and started (enabled) that supports BSC 3270 Device Emulation.

Enter option 3, and do the following:

- Check to see if the BSC 3270 Device Emulation subsystem is active by entering the STATUS control command (D T) and checking for a task ID of 9D. (The identifier 9D is the ID for BSC 3270 Device Emulation.)
- If the subsystem is not active, enable the BSC 3270 device emulation subsystem and try running the EM3270 procedure again. If the problem continues, notify the programmer responsible for maintaining this

job, and give the programmer the message identification code (EMU-3101).

Additional Information:

Find out if the EM3270 procedure was changed since it was installed on your system. If the procedure was changed, reinstall BSC 3270 Device Emulation and run the procedure again. If the problem continues, fill out a *Problem Summary Form* and notify your programming service representative.

User Response:

Option 3: The job is canceled. Data created by a previous step in this job is saved, but data created by this step is lost.

EMU —3102 3270 emulation information control block error

Severity: 3 Auto Response: 3

Explanation:

A program error occurred when you tried to sign a work station on or off 3270 Device Emulation.

To continue, enter option 3. If the error continues, notify the programmer responsible for maintaining this job, and give the programmer the message identification code (EMU-3102).

Additional Information:

The real time interface table information control block (RICB) contains inconsistent data. If the error continues, fill out a *Problem Summary Form* and notify your programming service representative.

User Response:

Option 3: The job is canceled. Data created by a previous step in this job is saved, but data created by this step is lost.

EMU —3103 3270 emulation is not active to location [location name]

Severity: 3 Auto Response: 3

Explanation:

You tried to run the EM3270 procedure. However, the location name specified is not correct for the SSP-ICF subsystem that supports BSC 3270 Device Emulation. The incorrect location name is given in the message.

Enter option 3, and run the EM3270 procedure again with the correct location name. If the problem continues, notify the programmer responsible for maintaining this job, and give the programmer the message identification code (EMU-3103).

Additional Information:

The location specified in parameter 3 of the EM3270 procedure is not enabled for an SSP-ICF subsystem that currently supports BSC 3270 Device Emulation. The location is identified in the message.

The BSC 3270 subsystem that is currently enabled must be disabled before you can enable another BSC 3270 subsystem.

User Response:

Option 3: The job is canceled. Data created by a previous step in this job is saved, but data created by this step is lost.

EMU —3104 3270 emulation support inactive on all lines

Severity: 3 Auto Response: 3

Explanation:

A program error occurred while you tried to sign a work station on 3270 Device Emulation.

To continue, enter option 3. If the error continues, notify the programmer responsible for maintaining this job, and give the programmer the message identification code (EMU-3104).

Additional Information:

No communications lines are allocated to the BSC 3270 Device Emulation support.

If this error continues, contact your programming service representative.

User Response:

Option 3: The job is canceled. Data created by a previous step in this job is saved, but data created by this step is lost.

EMU —3105 Work station [work station ID] is not allocated to 3270 emulation

Severity: 3 Auto Response: 3

Explanation:

An error occurred when you tried to sign a work station off BSC 3270 Device Emulation. OFF was given in parameter 2 of the EM3270 procedure. However, the work station ID given in parameter 1 of the procedure is not currently allocated to BSC 3270 Device Emulation. (The work station ID is given in the message text.)

Enter option 3, and do the following:

- Use the STATUS control command (D W) to verify the work station ID.
- If the work station ID is not correct, run the EM3270 procedure again using a correct ID.
- Enter the STATUS control command (D W), and check to see if the display station is allocated to a BSC 3270 Device Emulation task.
- If the display station is *not* allocated to BSC 3270 Device Emulation, the error message is correct and no operator action is needed.

- If the display station is allocated to BSC 3270 device emulation, notify the programmer responsible for maintaining this job, and give the programmer the message identification code (EMU-3105).

Additional Information:

Be sure the entry for this parameter is correct in any operation control language (OCL) procedure used. Then verify again the actions of the operator. If the error occurs again, fill out a *Problem Summary Form* and notify your programming service representative.

User Response:

Option 3: The job is canceled. Data created by a previous step in this job is saved, but any data created by this step is lost.

EMU —3106 Work station [work station ID] is protected from sign-off

Severity: 3 Auto Response: 3

Explanation:

You tried to sign a command-capable work station off BSC 3270 Device Emulation. The work station specified in parameter 1 of the EM3270 procedure is a command-capable work station. Therefore, it cannot be signed off by the EM3270 procedure. (The ID of the command-capable work station is given in the message text.)

Enter option 3, and do the following:

- Press command key 24 on the display station you are signing off.
- Sign on the system console.
- Select the same display you were using on the display station you just signed off. Run the EM3270 procedure to select the display, and use BSC 3270 Device Emulation.
- Try to sign off the display station again at the system console. If the error occurs again, notify the programmer responsible for maintaining this job, and give the programmer the message identification code (EMU-3106).

If this error occurs during an attempt to sign off a printer, notify your programmer.

Additional Information:

Be sure the entry for this parameter is correct in any OCL procedure used. Then verify the actions of the operator. If the error occurs again, fill out a *Problem Summary Form* and notify your programming service representative.

User Response:

Option 3: The job is canceled. Data created by a previous step in this job is saved, but data created by this step is lost.

EMU —3109 Sign-on not allowed. All sessions active

Severity: 3 Auto Response: 3

Explanation:

You tried to sign a work station on BSC 3270 device emulation. However, all sessions (3270 device addresses) configured for any display station or printer are already active (signed on).

To continue, enter option 3.

- If the error continues, notify the programmer responsible for maintaining this job, and give the programmer the message identification code (EMU-3109).

Additional Information:

Ensure that the operator is signing the work station on 3270 Device Emulation correctly, then do the following:

1. If there are no BSC 3270 Device Emulation tasks running, go to step 3.
2. Run the CNFIGICF procedure. Review the BSC 3270 device emulation subsystem configuration. Check the configured remote location. If the number of defined work stations is *greater than* the number of active BSC 3270 device emulation tasks, go to step 3.

If the number of defined work stations is *less than* the number of active BSC 3270 device emulation sessions, try the operation again. If the error occurs again, fill out a *Problem Summary Form* and notify your programming service representative.

3. Disable the BSC 3270 Device Emulation subsystem. Enable the BSC 3270 Device Emulation subsystem, and try the EM3270 procedure again. If the error continues, fill out a *Problem Summary Form* and notify your programming service representative.

User Response:

Option 3: The job is canceled. Data created by a previous step in this job is saved, but data created by this step is lost.

EMU —3110 Work stn [work station ID] is already allocated to 3270 emulation

Severity: 3 Auto Response: 3

Explanation:

You tried to sign a work station on BSC 3270 device emulation. However, the work station identified in the message is already allocated to BSC 3270 Device Emulation.

Enter option 3, and do the following:

Use the STATUS control command to verify that the work station ID is correct.

If the work station is a printer:

- Run the EM3270 procedure to sign off the device.
- If you cannot sign the device off BSC, notify your programmer.

- Try to sign on the device again by running the EM3270 procedure.
- If the error continues, notify the programmer responsible for maintaining this job, and give the programmer the message identification code (EMU-3110).

If the work station is a display:

- If the display station is in inquiry mode, press command key 1 to return to normal processing.
- If the display station is signed on BSC 3270 Device Emulation, sign off BSC 3270 Device Emulation.
- Try running the EM3270 procedure again.
- If the error continues, notify the programmer responsible for maintaining this job, and give the programmer the message identification code (EMU-3110).

Additional Information:

The work station ID specified in parameter 1 of the EM3270 procedure is already signed on BSC 3270 Device Emulation. A work station can be allocated only once.

Verify the actions of the operator. Disable the BSC 3270 Device Emulation subsystem, then enable it. Then run the EM3270 procedure again. If the error continues, fill out a *Problem Summary Form* and notify your programming service representative.

User Response:

Option 3: The job is canceled. Data created by a previous step in this job is saved, but data created by this step is lost.

EMU —3111 Configuration conflict for work station [work station ID]

Severity: 3 Auto Response: 3

Explanation:

You tried to sign on BSC 3270 Device Emulation using a device different from the one for which the System/36 is configured.

Enter option 3, and do the following:

- Use the STATUS control command (D W) to verify that the work station ID is correct.
- If the work station ID is correct, notify the programmer responsible for maintaining this job, and give the programmer the message identification code (EMU-3111).

Additional Information:

The enabled configuration of the SSP-ICF subsystem that supports BSC 3270 Device Emulation specifies the work station as a printer or display station. However, the current System/36 configuration defines the same work station as the opposite type of device (printer or display station). Both configurations must be the same.

- Run the CNFIGICF procedure, and review the BSC 3270 Device Emulation subsystem configuration record.
- Determine if the work station ID assignments are correct. Make sure that no display station ID is assigned to a printer and that no printer ID is assigned to a display station.

- If all of the work station and printer IDs are correct, run the CNFIGSSP procedure and verify that the system definition of the work stations is correct.
- If the error continues, fill out a *Problem Summary Form* and notify your programming service representative.

User Response:

Option 3: The job is canceled. Data created by a previous step in this job is saved, but data created by this step is lost.

EMU —3115 Sign-on not allowed--3270 support being disabled

Severity: 3 Auto Response: 3

Explanation:

You tried to sign a work station on BSC 3270 device emulation. However, the SSP-ICF subsystem that supports BSC 3270 Device Emulation is being disabled.

To continue, enter option 3.

Use the STATUS control command (D T) to display the status of the system tasks to determine if the BSC 3270 device emulation subsystem is active. If the BSC 3270 device emulation subsystem is active:

- Disable the BSC 3270 Device Emulation subsystem.
- Enable the BSC 3270 Device Emulation subsystem.
- Run the EM3270 procedure again.
- If the problem continues, notify the programmer responsible for maintaining this job, and give the programmer the message identification code (EMU-3115).

Additional Information:

Verify the actions of the operator. If the problem continues, fill out a *Problem Summary Form* and notify your programming service representative.

User Response:

Option 3: The job is canceled. New data created by a previous step in this job is saved, but new data created by this step is lost.

EMU —3117 Library member #EM71 is not a translate table

Severity: 3 Auto Response: 3

Explanation:

You tried to sign a work station on BSC 3270 device emulation. However, there is a problem with the IBM-supplied translation table member #EM71 in #LIBRARY:

- The library member #EM71 is not in #LIBRARY.
- This library member is the wrong size.
- This library member is not a translate table.

To continue, enter option 3. If the error continues, notify the programmer responsible for maintaining this job, and give the programmer the message identification code (EMU-3117).

Additional Information:

Install BSC 3270 Device Emulation again. Enable the BSC 3270 subsystem and run the EM3270 procedure.

If this error continues, fill out a *Problem Summary Form* and contact your programming service representative.

User Response:

Option 3: The job is canceled. Data created by a previous step in this job is saved, but data created by this step is lost.

EMU —3119 Sign-on not allowed--work station is in KANJI mode

Severity: 3 Auto Response: 3

Explanation:

You tried to sign a work station onto BSC 3270 Device Emulation. However, the work station that you tried to sign onto is in KANJI mode. BSC 3270 Device Emulation cannot be run from a work station in KANJI mode.

To run BSC 3270 Device Emulation, sign off the work station, then sign back on specifying 'N' on the IGC prompt.

User Response:

Option 3: The job is canceled. New data created by a previous step in this job is saved, but new data created by this step is lost.

EMU —4001 Last AID key ignored

Severity: N/A Auto Response: N/A

Explanation:

The last AID (attention identifier) key pressed, such as the Enter key or a command key, did not cause a message to be sent to the remote host. To continue, press the Error Reset key. You must enter the data from the previous display again.

If the error continues, notify the programmer responsible for maintaining this job, and give the programmer the message identification code (EMU-4001).

Note: See the *3270 Device Emulation Guide* for information about command keys.

User Response:

Recovery options are not required for this message.

EMU —4002 Last screen not returned to host

Severity: N/A Auto Response: N/A

Explanation:

The last display from the operator was only partially returned to the host because the host abnormally terminated reception of the display.

To continue, press the Error Reset key. If the error continues, notify the programmer responsible for maintaining this job, and give the programmer the message identification code (EMU-4002).

User Response:

Recovery options are not required for this message.

EMU —4003 Work station error--recover last screen

Severity: N/A Auto Response: N/A

Explanation:

A hardware or software error was detected by the System/36. Option 2 was taken at the System/36 console for the work station error message. At this time, you must try to display the last screen that was active. The message displayed at the System/36 console describes the work station error more precisely.

To continue, press the Error Reset key. Further recovery, including which command keys to use, depends on the type of remote host you are communicating with. If the error occurs again, notify the programmer responsible for maintaining this job, and give the programmer the message identification code (EMU-4003).

Note: See the *3270 Device Emulation Guide* for information about command keys.

Additional Information:

Determine if the error is in a specific application, fill out a *Problem Summary Form*, and notify your programming service representative.

User Response:

Recovery options are not required for this message.

EMU —4004 Data link error--SSP-ICF return code [return code]

Severity: N/A Auto Response: N/A

Explanation:

An error occurred on the communications line that supports BSC 3270 Device Emulation. The return code is given in the message.

To continue, press the Error Reset key. If the error continues, notify the programmer responsible for maintaining this job, and give the programmer the message identification code (EMU-4004).

Additional Information:

Further recovery, including which command keys to use, depends on the remote host type you are communicating with. For more information about the SSP-ICF return codes and command keys, see the *3270 Device Emulation Guide*.

User Response:

Recovery options are not required for this message.

EMU —4005 Data stream error--recover last screen

Severity: N/A Auto Response: N/A

Explanation:

A WRITE command containing incorrect orders was received from the remote host. You must cause the last display that was active to appear on the screen.

To continue, press the Error Reset key. If the error occurs again, notify the programmer responsible for maintaining this job, and give the programmer the message identification code (EMU-4005).

Additional Information:

The data stream received from the remote host was a WRITE (or ERASE/WRITE) command that contained an incorrect 3270 order (a buffer address out of range, for example). Further recovery, including which command keys to use, depends on the remote host type you are communicating with. See the *3270 Device Emulation Guide* for more information about command keys.

User Response:

Recovery options are not required for this message.

EMU —4006 More than maximum of ##### input fields

Severity: 3 Auto Response: 3

Explanation:

A WRITE command that defined more input fields than your work station can display was received from the remote host. As a result, the display screen has been cleared.

You must establish communications with the host application again.

Additional Information:

The data stream received from the remote host was a WRITE (or ERASE/WRITE) command that defined more input fields than the current work station can display.

The information in that data stream was lost and the display screen was cleared. The remote host has been notified of the problem with a sense code of OC (operation check). The session with the remote host application may or may not be active.

Press the Error Reset key to continue. Further recovery, including which command keys to use, depends on the remote host (physical device) type you are communicating with. See the *3270 Device Emulation Guide* for more information about command keys.

User Response:

Recovery options are not required for this message.

Chapter 3. ESU Messages (SNA)

ESU —2010 Incorrect parm 2. Must be ON, OFF, CLO, or blank

Severity: 3 Auto Response: 3

Explanation:

There is an error in the procedure you are running.

Enter option 3 and do the following:

- Make sure the second parameter is ON, OFF, CLO, or blank. Check for a typing error you might have made when entering the ES3270 procedure (for example, spelled a word wrong, left out a word or comma, or added a comma). If you find the error, run this job step again. You can use HELP ES3270 to help you enter the ES3270 procedure correctly.
- If you cannot correct this error, notify the programmer responsible for maintaining this job, and give the programmer the message identification code (ESU-2010).

Additional Information:

Parameter 2 in the ES3270 procedure is not correct. Parameter 2 specifies that a work station is to be signed on or off SNA 3270 Device Emulation. Parameter 2 also may specify that a printer is to be signed on or off SNA Device Emulation or CLO if the 3270 printer emulation spool file is to be closed. Correct entries for parameter 2 are ON, OFF, CLO, or blank (meaning the parameter should not be specified).

Ensure that the ES3270 procedure was not changed since it was installed on your system. If the procedure was changed, reinstall SNA 3270 Device Emulation and run the procedure again. If the error continues, fill out a *Problem Summary Form* and notify your programming service representative.

User Response:

Option 3: The job is canceled. Data created by a previous step in this job is saved, but data created by this step is lost.

ESU —2011 EP3270 cannot be run from the JOBQ or evoked

Severity: 3 Auto Response: 3

Explanation:

The EP3270 procedure was erroneously either placed on the job queue or evoked. The EP3270 procedure cannot be placed on the job queue or evoked because it requires interactive processing.

User Response:

Option 3: The job is canceled. Data created by a previous step in this job is saved, but data created by this step is lost.

ESU —2012 Incorrect parm 9. Must be OP, BR, nn, or blank

Severity: 3 Auto Response: 3

Explanation:

There is an error in the procedure you are running.

Enter option 3 and do the following:

- If spool printer closing is controlled by bracket protocol, the ninth parameter must be BR.

If spool closing is to be controlled by time value, the parameter, nn, must be 01 to 99 minutes. If, during the time specified, nothing has been received from the host for the printer, the spool file will automatically close.

If BR or nn is not required, set this parameter with OP or leave blank to specify operator control.

- Check for a typing or spelling error you may have made when entering the ES3270 procedure. If you find the error, run this job step again. You can use HELP ES3270 to help you enter the ES3270 procedure correctly.
- If you cannot correct this error, notify the programmer responsible for maintaining this job, and give the programmer the message identification code (ESU-2012).

Additional Information:

Parameter 9 in the ES3270 procedure is not correct. Parameter 9 specifies what type of control you require for the ES3270 printer spool file. Correct entries for parameter 9 are OP, BR, nn or blank (meaning the parameter should not be specified).

Ensure that the ES3270 procedure was not changed since it was installed on your system. If the procedure was changed, reinstall SNA 3270 Device Emulation and run the procedure again. If the error continues, fill out a *Problem Summary Form* and notify your programming service representative.

User Response:

Option 3: The job is canceled. Data created by a previous step in this job is saved, but data created by this step is lost.

ESU —3100 [work station ID] is an invalid work station ID

Severity: 3 Auto Response: 3

Explanation:

There is an error in the procedure you are running.

Enter option 3, and do the following:

- Check to see if the value given for the work station ID is correct by sending a message control command (MESSAGE or MSG) to the work station you specified in the ES3270 procedure.
- If the work station ID is correct, run the procedure again using HELP ES3270.
- If the work station ID is not correct, notify the programmer responsible for maintaining this job, and give the programmer the message identification code (ESU-3100).

Additional Information:

Parameter 1 in the ES3270 procedure is not a correct work station ID in the current System/36 configuration.

Use the STATUS control command (D W) to display the status of the work station, or run the configuration (CNFIGSSP) procedure and review the current configuration record to determine a correct work station ID. Try running the ES3270 procedure again using a correct work station ID.

If the problem remains, be sure that the ES3270 procedure was not changed since it was installed on your system. If the procedure was changed, reinstall SNA 3270 Device Emulation and run the procedure again. If the error continues, fill out a *Problem Summary Form* and notify your programming service representative.

User Response:

Option 3: The job is canceled. Data created by a previous step in this job is saved, but new data created by this step is lost.

ESU —3101 3270 emulation support is not active

Severity: 3 Auto Response: 3

Explanation:

You tried to sign a work station on SNA 3270 device emulation. However, there is no SSP-ICF subsystem enabled that supports SNA 3270 Device Emulation.

Enter option 3, and do the following:

- Check to see if the SNA 3270 Device Emulation subsystem is active by entering the STATUS control command (D T) and checking for a task ID of C3. (C3 is the task ID of the SNA 3270 Device Emulation subsystem.)
- If the subsystem is not active, enable the SNA 3270 device emulation subsystem, and run the ES3270 or EP3270 procedure again. If the problem continues,

notify the programmer responsible for maintaining this job, and give the programmer the message identification code (ESU-3101).

Additional Information:

Find out if the ES3270 or EP3270 procedure was changed since it was installed on your system. If the procedure was changed, reinstall SNA 3270 Device Emulation and run the procedure again. If the problem continues, fill out a *Problem Summary Form* and notify your programming service representative.

User Response:

Option 3: The job is canceled. Data created by a previous step in this job is saved, but data created by this step is lost.

ESU —3102 3270 emulation active on many lines; give loc name

Severity: 3 Auto Response: 3

Explanation:

An error occurred when you tried to sign a work station on SNA 3270 Device Emulation. More than one communication line is ready with SNA Device Emulation, but no location is specified on the ES3270 or EP3270 procedure.

Enter option 3, and do the following:

- Run the procedure again, and specify a location. (If you do not know where to put the location parameter in the procedure, use HELP ES3270 or HELP EP3270.)
- If the error continues, notify the programmer responsible for maintaining this job, and give the programmer the message identification code (ESU-3102).

Additional Information:

When more than one line is active with SNA 3270 device emulation, a default location cannot be determined. While multiple communication lines are active, do the following:

- Run the CNFIGICF procedure, and review all SNA 3270 device emulation subsystem configuration records to determine which location has the defined display station.
- Use the name of that location in the ES3270 or EP3270 procedure.

(If only one communication line is active, this message will not occur; instead, message ESU-3104 may occur.)

User Response:

Option 3: The job is canceled. Data created by a previous step in this job is saved, but data created by this step is lost.

ESU —3103 3270 emulation not active to location [location name]

Severity: 3 Auto Response: 3

Explanation:

You tried to run the ES3270 or EP3270 procedure. However, the location name specified is not correct for the SSP-ICF subsystem that supports SNA 3270 device emulation. The incorrect location name is given in the message.

Enter option 3, and run the procedure again with the correct location name. If the problem continues, notify the programmer responsible for maintaining this job, and give the programmer the message identification code (ESU-3103).

Additional Information:

The location specified in the ES3270 or EP3270 procedure is not enabled for an SSP-ICF subsystem that currently supports SNA 3270 Device Emulation. The location is identified in the message.

The SNA 3270 subsystem that is currently enabled must be disabled before you can enable another SNA 3270 subsystem.

User Response:

Option 3: The job is canceled. Data created by a previous step in this job is saved, but data created by this step is lost.

ESU —3104 3270 emulation support active on many locations

Severity: 3 Auto Response: 3

Explanation:

An error occurred when you tried to sign a work station on SNA 3270 Device Emulation. There is more than one location active on the SNA 3270 subsystem that is enabled, but a location is not specified in the ES3270 or EP3270 procedure.

Enter option 3, and do the following:

- Run the procedure again, specifying a location. (If necessary, you can use HELP ES3270 or HELP EP3270 to specify the location.)
- If the error occurs again, notify the programmer responsible for maintaining this job, and give the programmer the message identification code (ESU-3104).

Additional Information:

While only one communications line is active, do the following:

- Run the CNFIGICF procedure, and review the SNA 3270 Device Emulation subsystem configuration record.
- Check the configuration record for the number of locations that are active while the ENABLE procedure is running.
- If more than one location is configured to be active or is active, determine at which location your display station is defined, and use the name of that location in the procedure.
- If only one location was defined in the configuration or is active, disable the SNA 3270 Device Emulation subsystem and run the ENABLE procedure again.

(If multiple communications lines are active, this message will not occur; instead, message ESU-3102 may occur.)

User Response:

Option 3: The job is canceled. Data created by a previous step in this job is saved, but data created by this step is lost.

Note: If this error occurs again, contact your programming service representative.

ESU —3105 Work station [work station ID] not allocated to 3270 emulation

Severity: 3 Auto Response: 3

Explanation:

An error occurred when you tried to sign a work station off SNA 3270 Device Emulation. OFF was given in parameter 2 of the ES3270 procedure. However, the work station ID given in parameter 1 of the procedure is not currently allocated to SNA 3270 Device Emulation. The work station is identified in the message text.

Enter option 3, and do the following:

- Use the STATUS control command (D W) to verify the work station ID.
- If the work station ID is not correct, run the ES3270 procedure again using a correct ID.
- Use the STATUS control command (D W) to check to see if the display station is allocated to an SNA 3270 Device Emulation task.
- If the display station is *not* allocated to SNA 3270 Device Emulation, the error message is correct and no operator action is needed.
- If the display station is allocated to SNA 3270 Device Emulation, notify the programmer responsible for maintaining this job, and give the programmer the message identification code (ESU-3105).

Additional Information:

Verify the actions of the operator. If the error occurs again, fill out a *Problem Summary Form* and notify your programming service representative.

User Response:

Option 3: The job is canceled. Data created by a previous step in this job is saved, but data created by this step is lost.

ESU —3106 Work station [work station ID] is protected from sign-off

Severity: 3 Auto Response: 3

Explanation:

You tried to sign a command-capable work station off SNA 3270 Device Emulation. The work station specified in parameter 1 of the ES3270 procedure is a command-capable work station. Therefore, it cannot be signed off by the ES3270 procedure. The ID of the command-capable work station is given in the message text.

Enter option 3, and do the following:

- Press the Attention key on the display station you are signing off, and enter option 4.
- Sign on to the system console.
- Select the same display you were using on the display station you just signed off. Run the ES3270 procedure to select the display, and use SNA 3270 Device Emulation.
- Try to sign off the display station again at the system console. If the error occurs again, notify the programmer responsible for maintaining this job, and give the programmer the message identification code (ESU-3106).

If this error occurs while you are trying to sign off a printer, notify your programmer.

Additional Information:

Verify the actions of the operator. If the error occurs again, fill out a *Problem Summary Form* and notify your programming service representative.

User Response:

Option 3: The job is canceled. Data created by a previous step in this job is saved, but data created by this step is lost.

ESU —3108 No printer exists for a host-initiated copy

Severity: 3 Auto Response: 3

Explanation:

An error has been encountered during an attempt to sign a work station on 3270 Device Emulation.

A host-initiated copy command cannot be run for this 3270 device emulation session because this system has no printer.

Additional Information:

If the zero option is chosen and a host-initiated copy command is requested, the command is rejected and the host receives an SNA sense code of 0801 (resource not available).

User Response:

Option 0: Allow the SNA 3270 Device Emulation session to continue to be initialized. But, if a host-initiated copy command is requested, the command is rejected.

Option 3: The job is canceled. Any new data created by a previous step in this job is saved, but any new data created by this step is lost.

ESU —3109 Sign-on not allowed. All sessions active

Severity: 3 Auto Response: 3

Explanation:

You tried to sign a work station on SNA 3270 device emulation. However, all sessions (3270 device addresses) configured for any display station, printer, or for 3278/9 Emulation via IBM PC are already active (signed on).

Enter option 3, and do the following:

- Use the STATUS control command (D U) and check the number of (CNFIGICF) tasks running on SNA 3270 Device Emulation. (A maximum of 30 tasks can run at a time.)
- Give the programmer responsible for maintaining this job both the number of active SNA 3270 Device Emulation tasks and the message identification code (ESU-3109).

Additional Information:

Verify the actions of the operator and do the following:

1. If there are no SNA 3270 Device Emulation tasks running, go to step 3.
2. Run the CNFIGICF procedure. Review the SNA 3270 device emulation subsystem. Check the configured remote location. If the number of defined work stations is greater than the number of SNA 3270 Device Emulation tasks, go to step 3.

If the number of work stations defined in the CNFIGICF procedure is more than the number of active SNA 3270 Device Emulation sessions, try the operation again. If the error occurs again, fill out a *Problem Summary Form* and notify your programming support representative.

3. Disable the SNA 3270 Device Emulation subsystem. Enable the SNA 3270 Device Emulation subsystem, and try the ES3270 or EP3270 procedure again. If the error continues, fill out a *Problem Summary Form* and notify your programming service representative.

User Response:

Option 3: The job is canceled. Data created by a previous step in this job is saved, but data created by this step is lost.

ESU —3110 Work stn [work station ID] already allocated to 3270 emulation

Severity: 3 Auto Response: 3

Explanation:

You tried to sign a work station on SNA 3270 device emulation. However, the work station ID identified in the message is already allocated to SNA 3270 Device Emulation.

Enter option 3, and do the following:

Verify that the work station ID is correct. If the work station is a printer:

- Run the ES3270 procedure to sign off the device.
- If sign-off does not work, notify your programmer.

- Try to sign on the device again by running the either the ES3270 procedure or the EP3270 procedure.
- If the error continues, notify the programmer responsible for maintaining this job, and give the programmer the message identification code (ESU-3110).

If the work station is a display:

- If the display station is in inquiry mode, press command key 1 to return to normal processing.
- If the display station is signed on SNA 3270 Device Emulation, sign off SNA 3270 Device Emulation.
- Run the ES3270 or EP3270 procedure again.
- If the error continues, notify the programmer responsible for maintaining this job, and give the programmer the message identification code (ESU-3110).

Additional Information:

The work station ID specified in parameter 1 of the ES3270 procedure is already signed on to SNA 3270 Device Emulation. A work station can be allocated only once.

Verify the actions of the operator. Disable the SNA 3270 Device Emulation subsystem, then enable it. Run the ES3270 procedure again. If the error continues, fill out a *Problem Summary Form* and notify your programming service representative.

User Response:

Option 3: The job is canceled. Data created by a previous step in this job is saved, but data created by this step is lost.

ESU —3111 Configuration conflict for work station [work station ID]

Severity: 3 Auto Response: 3

Explanation:

You tried to sign on SNA 3270 Device Emulation using a device different from the one for which the System/36 is configured.

Enter option 3, and do the following:

- Use the STATUS control command (D W) to verify that the work station ID is correct.
- If the work station ID is correct, notify the programmer responsible for maintaining this job, and give the programmer the message identification code (ESU-3111).

Additional Information:

The enabled configuration of the SSP-ICF subsystem that supports SNA 3270 Device Emulation specifies the work station as a printer or display station. However, the current System/36 configuration defines the same work station as the opposite type of device (printer or display station). Both configurations must be the same:

- Run the CNFIGICF procedure, and review the SNA 3270 Device Emulation subsystem configuration record.

- Determine if the work station ID assignments are correct. Make sure that no display station ID is assigned to a printer and that no printer ID is assigned to a display station.
- If all of the work station and printer IDs are correct, run the CNFIGSSP procedure and verify that the system definition of the work stations is correct.
- If the error continues, fill out a *Problem Summary Form* and notify your programming service representative.

User Response:

Option 3: The job is canceled. Data created by a previous step in this job is saved, but data created by this step is lost.

ESU —3112 Invalid positions parameter specified in procedure

Severity: 3 Auto Response: 3

Explanation:

There is an error in the procedure you are running. To continue, enter option 3.

Additional Information:

Parameter 7 in the ES3270 procedure is invalid. Parameter 7 specifies the number of print positions in a line. Any number from 1 through 132, or blanks, can be specified.

If blanks are specified, the system assumes 132 print positions.

User Response:

Option 3: The job is canceled. New data created by a previous step in this job is saved, but new data created by this step is lost.

ESU —3113 Invalid lines parameter specified in procedure

Severity: 3 Auto Response: 3

Explanation:

There is an error in the procedure you are running. To continue, enter option 3.

Additional Information:

Parameter 8 in the ES3270 procedure is invalid. Parameter 8 specifies the number of lines per page. Any number from 1 through 112, or blanks, can be specified.

If blanks are specified, the system assumes the currently defined lines per page value.

User Response:

Option 3: The job is canceled. New data created by a previous step in this job is saved, but data created by this step is lost.

ESU —3115 Sign-on not allowed--3270 support being disabled

Severity: 3 Auto Response: 3

Explanation:

You tried to sign a work station on SNA 3270 device emulation. However, the SSP-ICF subsystem that supports SNA 3270 Device Emulation is being disabled.

Enter option 3, and do the following:

Use the STATUS control command (D T) to display the status of the system tasks to determine if the SNA 3270 device emulation subsystem is active. If the SNA 3270 device emulation subsystem is active:

- Disable the SNA 3270 Device Emulation subsystem.
- Enable the SNA 3270 Device Emulation subsystem.
- Run the ES3270 or EP3270 procedure again.
- If the problem continues, notify the programmer responsible for maintaining this job, and give the programmer the message identification code (ESU-3115).

Additional Information:

Verify the actions of the operator. If the problem continues, fill out a *Problem Summary Form* and notify your programming service representative.

User Response:

Option 3: The job is canceled. Data created by a previous step in this job is saved, but data created by this step is lost.

ESU —3117 Library member #ES74 is not a translate table

Severity: 3 Auto Response: 3

Explanation:

You tried to sign a work station on SNA 3270 device emulation. However, the library member identified in the message is not a correct translate table member.

Possible causes are:

- The library member #ES74 is not in #LIBRARY.
- This library member is the wrong size.
- This library member is not a translate table.

To continue, enter option 3. If the error continues, notify the programmer responsible for maintaining this job, and give the programmer the message identification code (ESU-3117).

Additional Information:

Install SNA 3270 Device Emulation again. Enable the SNA 3270 subsystem and run the ES3270 procedure.

If this error continues, fill out a *Problem Summary Form* and contact your programming service representative.

User Response:

Option 3: The job is canceled. Data created by a previous step in this job is saved, but data created by this step is lost.

ESU —3118 Printer ID [printer ID] not valid for host-initiated copy

Severity: 3 Auto Response: 3

Explanation:

There is an error in the procedure you are running.

Enter option 3, and do the following:

- Verify that the ID in the ES3270 procedure is a printer ID. (You can use HELP ES3270 to help you enter the correct ID.)
- If the error continues, notify the programmer responsible for maintaining this job, and give the programmer the message identification code (ESU-3118).

Additional Information:

Parameter 4 in the ES3270 procedure is not correct. The parameter specified in the message text is not a correct printer ID for a host-initiated copy function (a copy function started by the host system).

Verify the actions of the operator. Ensure that the printer is locally attached. The printer must be locally attached for it to work. Run the CNFIGSSP procedure to verify that the printer is locally attached. If the error continues, fill out a *Problem Summary Form* and notify your programming service representative.

User Response:

Option 3: The job is canceled. Data created by a previous step in this job is saved, but data created by this step is lost.

ESU —3119 Sign-on not allowed--work station is in KANJI mode

Severity: 3 Auto Response: 3

Explanation:

You tried to sign a work station onto 3270 Device Emulation. However, the work station that you were trying to sign onto is in KANJI mode. 3270 Device Emulation cannot be run from a work station in KANJI mode.

To run 3270 Device Emulation, sign off the work station, then sign back on specifying 'N' on the IGC prompt.

User Response:

Option 3: The job is canceled. Data created by a previous step in this job is saved, but data created by this step is lost.

ESU —3120 EP3278 Emulation via PC is not active

Severity: 3 Auto Response: 3

Explanation:

EP3270 is only valid when entered from an IBM PC with the EP3278 feature active.

User Response:

Option 3: The job is canceled. Data created by a previous step in this job is saved, but data created by this step is lost.

ESU —3121 EP3278 is not at the correct level

Severity: 3 Auto Response: 3

Explanation:

The version of EP3278 loaded on the PC is not compatible with the version of EP3278 loaded on the System/36.

Additional Information: A PTF has been applied to the System/36 which requires the EP3278 feature to be downloaded to the IBM Personal Computer.

User Response:

Option 3: The job is canceled. Data created by a previous step in this job is saved, but data created by this step is lost.

ESU —3122 Inquiry option was not specified for EP3278

Severity: 3 Auto Response: 3

Explanation:

You are trying to sign on to 3270 SNA DE from inquiry mode but the inquiry option was not specified when the EP3278 support was enabled on the PC.

User Response:

Option 3: The job is canceled. Data created by a previous step in this job is saved, but data created by this step is lost.

ESU —3130 CLO is specified for non spooled printer

Severity: 3 Auto Response: 3

Explanation:

There is an error in the procedure you are running.

Enter option 3 and do the following:

- Make sure the printer specified in the first parameter is spooled.
- Check for a typing or spelling error you may have made when entering the ES3270 procedure. If you find the error, run this job step again. You can use HELP ES3270 to help you enter the ES3270 procedure correctly.
- If you cannot correct this error, notify the programmer responsible for maintaining this job, and give the programmer the message identification code (ESU-3130).

Additional Information:

Parameter 2 in the ES3270 procedure is not correct. Parameter 2 specifies that you require a ES3270 printer spool file to be closed.

Ensure that the ES3270 procedure was not changed since it was installed on your system. If the procedure was changed, reinstall SNA 3270 Device Emulation and run the procedure again. If the error continues, fill out a *Problem Summary Form* and notify your programming service representative.

User Response:

Option 3: The job is canceled. Data created by a previous step in this job is saved, but data created by this step is lost.

ESU —3131 Incorrect device ID [work station id] for the CLO operation

Severity: 3 Auto Response: 3

Explanation:

There is an error in the procedure you are running.

Enter option 3 and do the following:

- Make sure the first parameter contains a spooled printer ID.
- Check for a typing or spelling error you might have made when entering the ES3270 procedure. If you find the error, run this job step again. You can use HELP ES3270 to help you enter the ES3270 procedure correctly.
- If you cannot correct this error, notify the programmer responsible for maintaining this job, and give the programmer the message identification code (ESU-3131).

Additional Information:

Parameter 1 in the ES3270 procedure is not correct. Parameter 1 specifies the device ID given should correspond to a valid printer device ID.

Ensure that the ES3270 procedure was not changed since it was installed on your system. If the procedure was changed, reinstall SNA 3270 Device Emulation and run the procedure again. If the error continues, fill out a *Problem Summary Form* and notify your programming service representative.

User Response:

Option 3: The job is canceled. Data created by a previous step in this job is saved, but data created by this step is lost.

ESU —3150 ES3270 cannot be run on a 3270 device from inquiry

Severity: 3 Auto Response: 3

Explanation:

You tried to sign a 3270 device on SNA 3270 Device Emulation from the inquiry command screen. SNA 3270 Device Emulation is not supported from the inquiry command screen on a 3270 device.

Additional Information: None.

User Response:

Option 3: The job is canceled. Data created by a previous step in this job is saved, but data created by this step is lost.

ESU —3151 ES3270 cannot be run on a 3270 device; sys console

Severity: 3 Auto Response: 3

Explanation:

You tried to sign a 3270 device on SNA 3270 Device Emulation from a 3270 device which is the system console. SNA 3270 device emulation is not supported on a 3270 device which is the system console.

Additional Information: None.

User Response:

Option 3: The job is canceled. Data created by a previous step in this job is saved, but data created by this step is lost.

ESU —4001 Last AID key ignored

Severity: N/A Auto Response: N/A

Explanation:

The last AID (attention identifier) key pressed by the display station operator did not cause a message to be sent to the remote host.

To continue, press the Error Reset key. You must enter the data from the previous screen again. Further recovery, including which command keys to use, depends on the type of remote host with which you are communicating.

Note: See the *3270 Device Emulation Guide* for information about command keys.

User Response:

Recovery options are not required for this message.

ESU —4003 Work station error--recover last screen

Severity: N/A Auto Response: N/A

Explanation:

A hardware or software error was detected by System/36 work station data management. Option 2 was taken at the System/36 console for the work station error message. At this time, you must try to display the last screen that was active. The message displayed at the System/36 console describes the work station error more precisely.

To continue, press the Error Reset key. Further recovery, including which command keys to press, depends on the type of remote host you are communicating with. If the error continues, notify the programmer responsible for

maintaining this job, and give the programmer the message identification code (ESU-4003).

Note: See the *3270 Device Emulation Guide* for information about command keys.

Additional Information:

Determine if the error is in a specific application, fill out a *Problem Summary Form*, and notify your programming service representative.

User Response:

Recovery options are not required for this message.

ESU —4006 More than maximum of ##### input fields

Severity: 3 Auto Response: 3

Explanation:

A WRITE command from the remote host defined more input fields than your work station can display. The display screen is cleared. Now you must establish communications with the application at the host system again.

Additional Information:

The data stream received from the remote host was a WRITE or ERASE/WRITE command that defined more input fields than the current work station can display. The information in that data stream has been lost, and the display screen has been cleared. The remote host has been notified of the problem with a sense code of 1005. The session with the remote host application may or may not still be active.

Press the Error Reset key. Further recovery, including which command keys to use, depends on the remote host (physical device) type you are communicating with. See the *3270 Device Emulation Guide* for more information about command keys.

User Response:

Recovery options are not required for this message.

ESU —4007 Save screen operation failed

Severity: N/A Auto Response: N/A

Explanation:

An attempt to save the display shown on the System/36 display screen has failed. The options menu cannot be displayed until the display is saved.

User Response:

Option 0: Select this option to ignore the last request. If option 0 is selected, the display will be cleared and the sense code 082B is sent to the host.

Option 1: Select this option to retry the operation.

ESU —5001 No session available

Severity: N/A Auto Response: N/A

Explanation:

The SNA 3270 support subsystem was unable to allocate a control block while trying to start a 3270 emulation session.

To continue, press the Error Reset key. If the problem continues, notify the programmer responsible for maintaining this job, and give the programmer the message identification code (ESU-5001).

Additional Information:

Possible causes are:

- A logical unit address is not configured.
- The maximum number of logical unit addresses are in use.
- A specific logical unit address is allocated to another session or is in the process of terminating after being used.

Note: The Device Emulation program terminates. If other sessions are terminated, another session initialization can be attempted.

User Response:

Recovery options are not required for this message.

ESU —5002 Input inhibited. No session established

Severity: N/A Auto Response: N/A

Explanation:

You entered data before establishing an SNA 3270 device emulation session.

To continue, press the Error Reset key. If the problem continues, notify the programmer responsible for maintaining this job, and give the programmer the message identification code (ESU-5002).

Additional Information:

An operator entered data and tried to send this data to the host without first establishing a session. The session is not ready to send data (in start data traffic state).

Ensure that the host operator has entered all commands required to begin communications. Then, if necessary, use the SNA 3270 Device Emulation system request ('sys req') mode, and enter the correct host LOGON command. (The system request mode allows you to communicate directly with the host system rather than through an application program.)

User Response:

Recovery options are not required for this message.

ESU —5003 Attention function invalid now

Severity: N/A Auto Response: N/A

Explanation:

You selected the SNA 3270 attention ('ATTN') function, which cannot be processed at this time. Possible causes are:

- There is no session.
- The session is terminating.
- The operator is communicating from the local logical unit to the system services control point (SSCP) of the remote host system in system request ('sys req') mode.
- The operator selected the attention ('ATTN') function, and the host has not yet responded.

After ensuring that the session is active and not in system request mode, try the attention function again.

Additional Information:

The session may not be in data traffic state while the Attention key is pressed.

User Response:

After ensuring that the session is active and not in system request mode, retry the attention function.

ESU —5004 Communications established

Severity: N/A Auto Response: N/A

Explanation:

Communications have been successfully established with the host system. No operator response is required.

Additional Information:

This message is displayed only for printers and whenever an 'LU-LU (logical unit to logical unit) session active' or 'Start Data Traffic receive' message is received from the host. This message should be displayed only after a start data traffic received (SDT) operation has been performed.

User Response:

There are no recovery options for this message.

ESU —5005 Unacceptable session parameters received

Severity: N/A Auto Response: N/A

Explanation:

The host sent session parameters in the bind command that are unacceptable to SNA 3270 emulation. This problem can also occur if an incorrect LOGMODE parameter was specified on a LOGON command.

To continue, press the Error Reset key. If the error continues, notify the programmer responsible for maintaining this job, and give the programmer the message identification code (ESU-5005).

Additional Information:

This error is issued when SNA 3270 Device Emulation receives an 'LU-LU (logical unit to logical unit) session inactive' message with an 'invalid bind' modifier in the logical unit SNA control block (LUSCB).

If a LOGON command was entered, it may have had an incorrect LOGMODE parameter. If the condition cannot be corrected by entering a LOGON command again, notify a System/36 or host system programmer to determine the source of the session parameter in error.

User Response:

There are no recovery options for this message.

ESU —5007 Data stream error occurred

Severity: 5 Auto Response:

Explanation:

There is an error in the data stream received from the host system. The host system is responsible for the recovery.

To continue, press the Error Reset key. If the error continues, notify the programmer responsible for maintaining this job, and give the programmer the message identification code (ESU-5007).

Additional Information:

The host system sent a write-type command, and did not allow for synchronization of print-type requests. The write command means that both response and change direction indications were not required, or a 'cancel received' completion code was received with the total chain length that does not equal zero. If the error continues, fill out a *Problem Summary Form* and notify your programming service representative.

User Response:

There are no recovery options for this message.

ESU —5009 Insufficient system queue space for this session

Severity: N/A Auto Response: N/A

Explanation:

The SNA 3270 support subsystem was unable to allocate a control block for this SNA 3270 emulation session because not enough system queue space was available. The SNA 3270 Device Emulation program terminates.

To continue, press the Error Reset key. If the problem continues, notify the programmer responsible for maintaining this job, and give the programmer the message identification code (ESU-5009).

Additional Information:

C/SNA (combined SNA) was not able to allocate the SNA control block (SNUB or LUSCB) for this Device Emulation session because not enough system queue space was available. This message may be caused by an overloaded system.

User Response:

There are no recovery options for this message.

ESU —8196 Negative response received--[response]

Severity: N/A Auto Response: N/A

Explanation:

The host system program has rejected a request sent by the SNA 3270 Device Emulation operator. Eight characters of host system sense information are included in the message.

For display station emulation, press the Error Reset key and continue. For printer emulation, no action is necessary. If the problem continues, notify the programmer responsible for maintaining this job, and give the programmer the message identification code (ESU-8196).

Additional Information:

SNA 3270 Device Emulation sends a negative response with sense data = 08260000 when the 3270 operator input is not correct. The subsystem received a negative response on the logical unit to logical unit (LU-LU) normal flow or an immediate request to change directions (expedited flow). Look at the user sense data to detect why the negative response was sent.

User Response:

There are no recovery options for this message.

ESU —8197 SNA condition code [condition code]

Severity: N/A Auto Response: N/A

Explanation:

The SNA 3270 Device Emulation subsystem received the condition code identified in the message from System/36 SNA support. The message also identifies the session that the subsystem is running. No operator response is required.

Additional Information:

This message is issued whenever the SNA 3270 subsystem receives an 'LU closed' or 'LU-LU session inactive' indication from C/SNA (combined SNA). The condition code is also sent with the message.

The following is a list of condition codes that might appear in the message:

Code	Meaning
01	Lost session (DACTLU received)
02	Line lost (DACTPU received)
03	Invalid SSCPID specified in CNFIGICF (abnormal disconnect)
04	Automatic call failed, or protocol violation occurred

- 05 Close LU
- 06 Link error, or the line was dropped
- 0C Session unbound (CLSDST); applies only to printers

User Response:

There are no recovery options for this message.

Glossary

abnormal termination. A system failure or operator action that causes a job to end unsuccessfully.

allocate. To assign a resource, such as a disk file or a diskette file, to perform a specific task.

alternative system console. A command display station that can be designated as the system console.

asynchronous transmission. In data communications, a method of transmission in which the bits included in a character or block of characters occur during a specific time interval. However, the start of each character or block of characters can occur at any time during this interval. Contrast with *synchronous transmission*.

binary. (1) Pertaining to a system of numbers to the base two; the binary digits are 0 and 1. (2) Involving a choice of two conditions, such as on-off or yes-no.

binary synchronous communications (BSC). A form of communications line control that uses transmission control characters to control the transfer of data over a communications line. Compare with *synchronous data link control (SDLC)*.

bind command. An SNA command used to define the protocols for a session. Contrast with *unbind command*.

block. (1) A group of records that is recorded or processed as a unit. Same as *physical record*. (2) Ten sectors (2560 bytes) of disk storage. (3) In data communications, a group of records that is recorded, processed, or sent as a unit.

BSC. See *binary synchronous communications (BSC)*.

buffer. (1) A temporary storage unit, especially one that accepts information at one rate and delivers it at another rate. (2) An area of storage, temporarily reserved for performing input or output, into which data is read or from which data is written.

chain. (1) A group of logically linked records. (2) In SNA, a group of logically linked records that are transferred over a communications line.

character. A letter, digit, or other symbol.

code. (1) Instructions for the computer. (2) To write instructions for the computer. Same as *program*. (3) A representation of a condition, such as an error code.

command display station. A display station from which an operator can start and control jobs. A command display station can become an alternative system console, can be designated as a subconsole, and can also be used as a data display station. See also *alternative system console*, *data display station*, and *subconsole*.

configuration. The group of machines, devices, and programs that make up a data processing system. See also *system configuration*.

configuration member. (1) A library member that describes the devices, programming, and characteristics of the system. (2) In data communications, a member that defines the attributes of a communications subsystem or line.

configure. (1) To describe (to the system) the devices, optional features, and program products installed on a system. (2) To describe to SSP-ICF both the communications facilities connected to System/36 and the attributes of the subsystem and remote system.

console display. A display that can be requested only at the system console. From a console display an operator can display, send, and reply to messages and use all control commands.

control command. A command used by an operator to control the system or a work station. A control command does not run a procedure and cannot be used in a procedure.

data display station. A display station from which an operator can only enter data. A data display station is acquired and controlled by a program. Contrast with *command display station*.

inquiry mode. A mode during which the job currently running from a display station is interrupted so that other work can be done. The operator puts the display station in inquiry mode by pressing the Attn key.

Interactive Communications Feature (SSP-ICF). A feature of the System Support Program Product that allows a program to interactively communicate with another program or system.

library. (1) A named area on disk that can contain programs and related information (not files). A library consists of different sections, called library members. Compare with *folder*. (2) The set of publications for a system.

library member. A named collection of records or statements in a library. The types of library members are *load member*, *procedure member*, *source member*, and *subroutine member*.

local. Pertaining to a device, file, or system that is accessed directly from your system, without the use of a communications line. Contrast with *remote*.

location name. In interactive communications, the identifying name associated with a particular system or device.

logical unit (LU). The part of a system or device in an SNA network that allows a user or program to use the communications network.

LU. See *logical unit (LU)*.

member. See *library member*.

message identification code (MIC). A four-digit number that identifies a record in a message member. This number can be part of the message identification.

mode. A method of operation. For an example, see *enter/update mode*.

multiple. More than one.

parameter. A value supplied to a procedure or program that either is used as input or controls the actions of the procedure or program.

program. (1) A sequence of instructions for a computer. See *source program* and *load module*. (2) To write a sequence of instructions for a computer. Same as *code*.

protocol. A set of rules governing the communication and transfer of data between two or more devices in a communications system.

queue. A line or list formed by items waiting to be processed.

remote. Pertaining to a device, file, or system that is accessed by your system through a communications line. Contrast with *local*.

session. (1) The logical connection by which a System/36 program or device can communicate with a program or device at a remote location. (2) The length of time that starts when an operator signs on the system and ends when the operator signs off the system.

severity code. A code that indicates how serious a compiling error or an operating error is.

SNA. See *systems network architecture (SNA)*.

SSP-ICF. See *Interactive Communications Feature (SSP-ICF)*.

subconsole. A display station that controls a printer or printers.

subsystem. The part of communications that handles the requirements of the remote system, isolating most system-dependent considerations from the application program.

system configuration. A process that specifies the machines, devices, and programs that form a particular data processing system.

system console. A display station from which an operator can keep track of and control system operation.

systems network architecture (SNA). A set of rules for controlling the transfer of information in a data communications network.

terminal. In data communications, a device, usually equipped with a keyboard and a display device, capable of sending and receiving information over a communications line.

unbind command. An SNA command used to reset the protocols for a session. Contrast with *bind command*.

work station data management. The part of the System Support Program Product that enables a program to present data on a display screen by providing a string of data fields and a format name.

READER'S COMMENT FORM

Please use this form only to identify publication errors or to request changes in publications. Direct any request for additional publications, technical questions about IBM systems, changes in IBM programming support, and so on, to your IBM representative or to your nearest IBM branch office. You may use this form to communicate your comments about this publication, its organization, or subject matter with the understanding that IBM may use or distribute whatever information you supply in any way it believes appropriate without incurring any obligation to you.

If your comment does not need a reply (for example, pointing out a typing error) check this box and do not include your name and address below. If your comment is applicable, we will include it in the next revision of the manual.

If you would like a reply, check this box. Be sure to print your name and address below.

Page number(s):

Comment(s):

Please contact your nearest IBM branch office to request additional publications.

Name _____

Company or
Organization _____

Address _____

SC21-7945-4

Reader's Comment Form

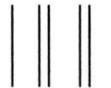
Cut Along Line

IBM System /36 3270 Device Emulation Messages

Please do not staple

Fold and tape

Fold and tape



NO POSTAGE
NECESSARY IF
MAILED IN THE
UNITED STATES

BUSINESS REPLY MAIL
FIRST CLASS PERMIT NO. 40 ARMONK, N.Y.



POSTAGE WILL BE PAID BY ADDRESSEE:
International Business Machines Corporation
Development Laboratory
Information Development Department 532
Rochester, Minnesota 55901

Fold and tape

Please do not staple

Fold and tape



International Business Machines Corporation

READER'S COMMENT FORM

Please use this form only to identify publication errors or to request changes in publications. Direct any request for additional publications, technical questions about IBM systems, changes in IBM programming support, and so on, to your IBM representative or to your nearest IBM branch office. You may use this form to communicate your comments about this publication, its organization, or subject matter with the understanding that IBM may use or distribute whatever information you supply in any way it believes appropriate without incurring any obligation to you.

If your comment does not need a reply (for example, pointing out a typing error) check this box and do not include your name and address below. If your comment is applicable, we will include it in the next revision of the manual.

If you would like a reply, check this box. Be sure to print your name and address below.

Page number(s):

Comment(s):

Please contact your nearest IBM branch office to request additional publications.

Name _____

Company or
Organization _____

Address _____

SC21-7945-4

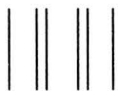
Reader's Comment Form

Cut Along Line

IBM System /36 3270 Device Emulation Messages

Please do not staple

----- Fold and tape -----



NO POSTAGE
NECESSARY IF
MAILED IN THE
UNITED STATES

BUSINESS REPLY MAIL
FIRST CLASS PERMIT NO. 40 ARMONK, N.Y.



POSTAGE WILL BE PAID BY ADDRESSEE:
International Business Machines Corporation
Development Laboratory
Information Development Department 532
Rochester, Minnesota 55901

----- Fold and tape -----

Please do not staple



International Business Machines Corporation

READER'S COMMENT FORM

Please use this form only to identify publication errors or to request changes in publications. Direct any request for additional publications, technical questions about IBM systems, changes in IBM programming support, and so on, to your IBM representative or to your nearest IBM branch office. You may use this form to communicate your comments about this publication, its organization, or subject matter with the understanding that IBM may use or distribute whatever information you supply in any way it believes appropriate without incurring any obligation to you.

If your comment does not need a reply (for example, pointing out a typing error) check this box and do not include your name and address below. If your comment is applicable, we will include it in the next revision of the manual.

If you would like a reply, check this box. Be sure to print your name and address below.

Page number(s):

Comment(s):

Please contact your nearest IBM branch office to request additional publications.

Name _____

Company or
Organization _____

Address _____

SC21-7945-4

Reader's Comment Form

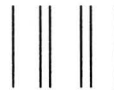
Cut Along Line

IBM System /36 3270 Device Emulation Messages

Please do not staple

Fold and tape

Fold and tape



NO POSTAGE
NECESSARY IF
MAILED IN THE
UNITED STATES

BUSINESS REPLY MAIL
FIRST CLASS PERMIT NO. 40 ARMONK, N.Y.



POSTAGE WILL BE PAID BY ADDRESSEE:
International Business Machines Corporation
Development Laboratory
Information Development Department 532
Rochester, Minnesota 55901

Fold and tape

Please do not staple

Fold and tape



International Business Machines Corporation



3270 Device Emulation Messages

International Business Machines Corporation

File Number
S36-36

Order Number
SC21-7945-4

Part Number
59X3984

Printed in U.S.A.

SC21-7945-04

